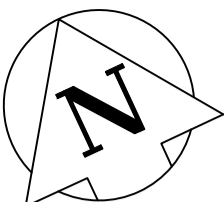


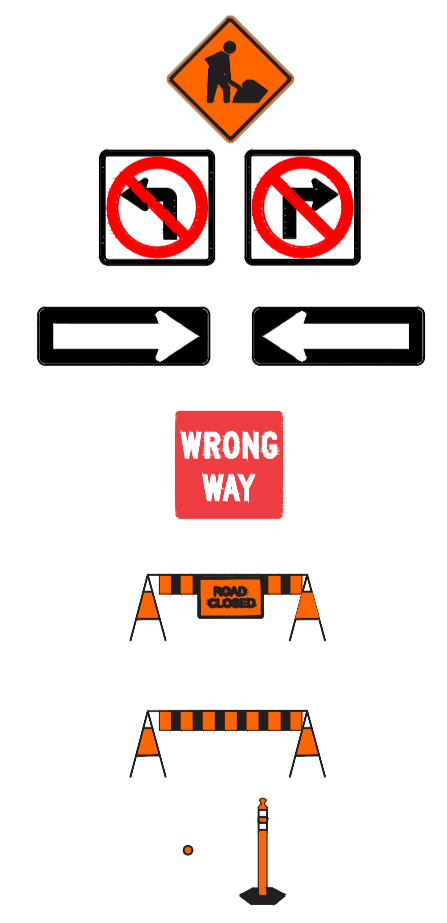
APPENDIX 'H'

**TEMPORARY TRAFFIC SIGNAGE
DRAWINGS**



TRAFFIC SIGNAGE

- TC-2 ROADWORK
- RB-11 (L/R) TURN PROHIBITED
- RB 21 (L/R) ONE-WAY SIGN
- RB 22 WRONG WAY SIGN
- ROAD CLOSED BARRICADE
- BARRICADE
- POLY POST



NOTES:

1. ALL TRAFFIC SIGNAGE AND TEMPORARY TRAFFIC CONTROL TO CONFORM WITH THE LATEST REVISION OF THE CITY OF WINNIPEG MANUAL OF TEMPORARY TRAFFIC CONTROL ON CITY STREETS
2. CONTRACTOR SHALL MAINTAIN SAFE PEDESTRIAN ACCESS AND CROSSINGS.
3. ROAD AND SIDEWALK ARE TO BE COMPLETELY CLOSED DURING THE DURATION OF CONSTRUCTION

METRIC
 WHOLE NUMBERS INDICATE MILLIMETRES
 DECIMALIZED NUMBERS INDICATE METRES

**ES ENGINEERS
 GEOSCIENTISTS
 MANITOBA**
 Certificate of Authorization
 WSP Canada Inc.
 No. 5750

FOR INFORMATION ONLY

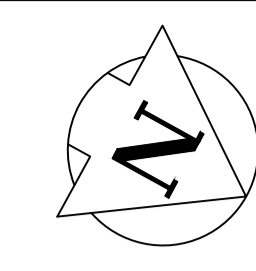
wsp

WSP Canada Inc.
 1600 Buffalo Place
 Winnipeg, MB R3T 6B8
 t. 204.474.2864
 f. 204.474.2864
 www.wsp.com

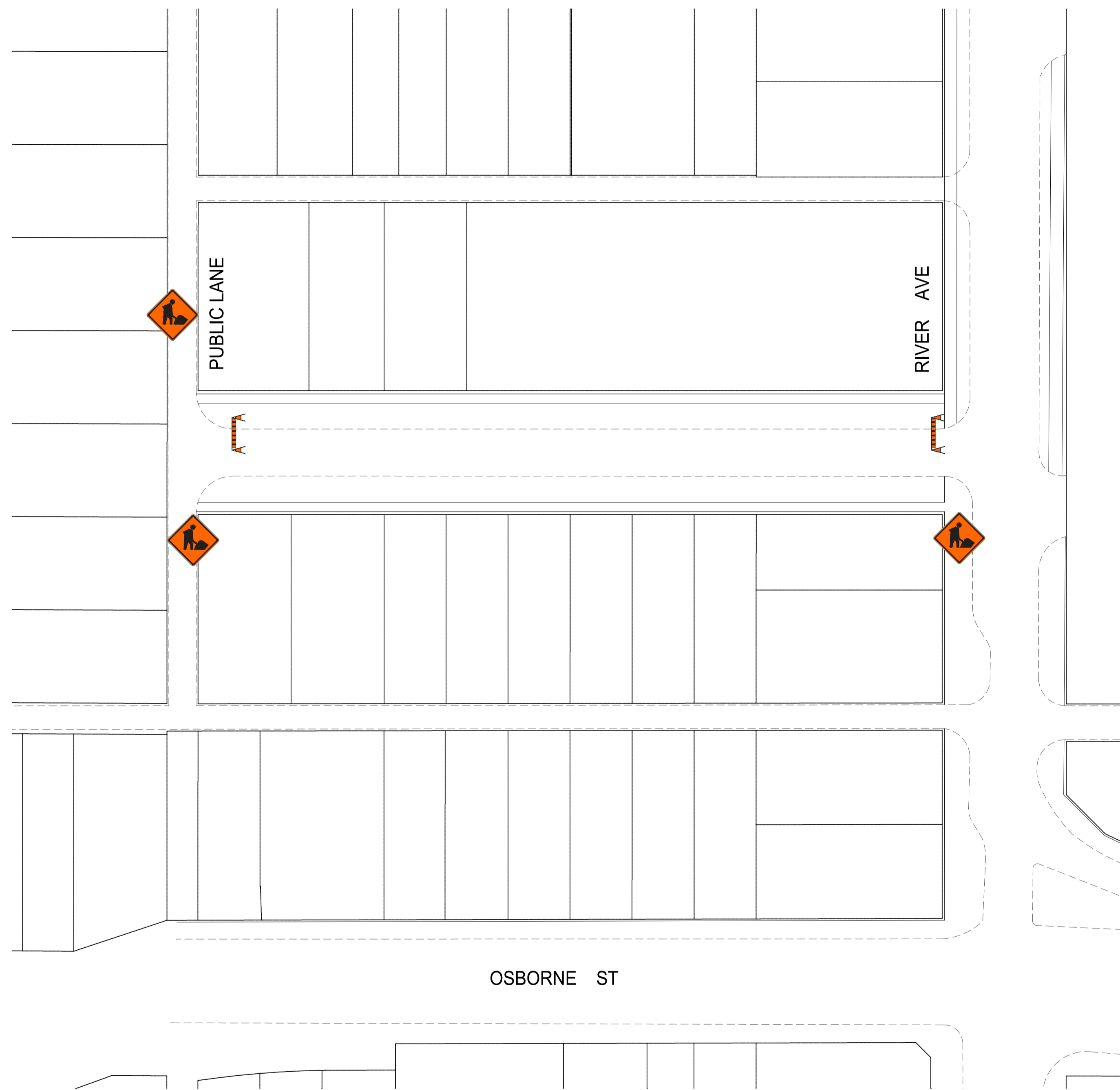
Winnipeg **THE CITY OF WINNIPEG**
 PUBLIC WORKS DEPARTMENT
 ENGINEERING SERVICES DIVISION

2022 LOCAL STREET RENEWALS
 DUFFERIN AVE / JARVIS AVE ALLEY
 TEMPORARY TRAFFIC SIGNAGE

Mar 21, 2022 - 9:21am
 F:\2021\21-12618-00 - 2022 Street Program Package 22-R-03\4.0 Tech + Prof Services\4.11 Highways_Bridges\4.11.06 Drawings\03 Working Dwg\Dufferin_Jarvis Signage.dwg -tab:DUFFERIN_JARVIS ALLEY



GERARD ST



OSBORNE ST

TRAFFIC SIGNAGE

TC-2 ROADWORK

RB-11 (L/R) TURN PROHIBITED

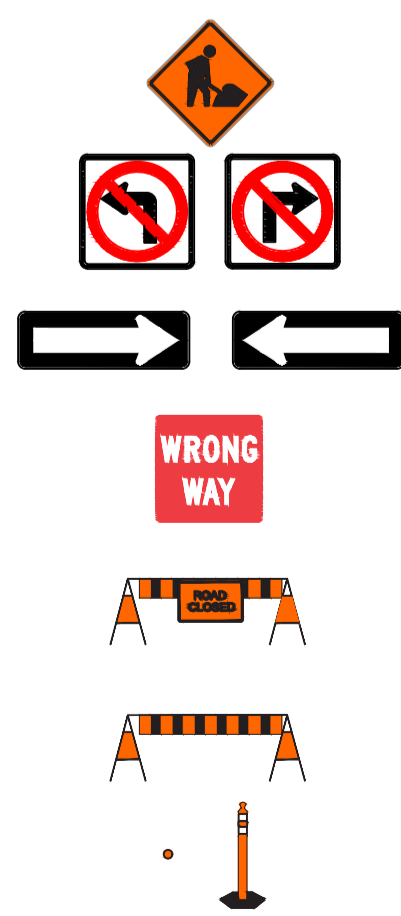
RB 21 (L/R) ONE-WAY SIGN

RB 22 WRONG WAY SIGN

ROAD CLOSED BARRICADE

BARRICADE

POLY POST



NOTES:

1. ALL TRAFFIC SIGNAGE AND TEMPORARY TRAFFIC CONTROL TO CONFORM WITH THE LATEST REVISION OF THE CITY OF WINNIPEG MANUAL OF TEMPORARY TRAFFIC CONTROL ON CITY STREETS
2. CONTRACTOR SHALL MAINTAIN SAFE PEDESTRIAN ACCESS AND CROSSINGS. WHERE SIDEWALKS ARE LOCATED ON BOTH SIDES OF THE STREET, CONTRACTOR MUST MAINTAIN PEDESTRIAN ACCESS ON ONE SIDE AT ALL TIME.
3. CONSTRUCTION IS TO BE COMPLETED LANE AT A TIME WITH TRAFFIC TO BE MAINTAINED IN BOTH DIRECTIONS. WHEN CONSTRUCTION IS COMPLETE IN FIRST LANE, TRAFFIC WILL BE MOVED TO THE COMPLETED LANE AND TRAFFIC CONTROL MIRRORED.
4. PARKING TO BE REMOVED AT TIME OF CONSTRUCTION

METRIC
WHOLE NUMBERS INDICATE MILLIMETRES
DECIMALIZED NUMBERS INDICATE METRES



**ENGINEERS
GEOSCIENTISTS
MANITOBA**
Certificate of Authorization
WSP Canada Inc.
No. 5750

FOR INFORMATION ONLY



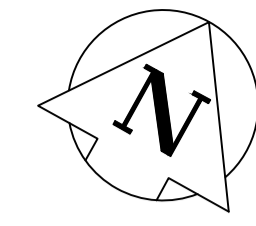
WSP Canada Inc.
1600 Buffalo Place
Winnipeg, MB R3T 6B8
t. 204.474.2864
f. 204.474.2864
www.wsp.com



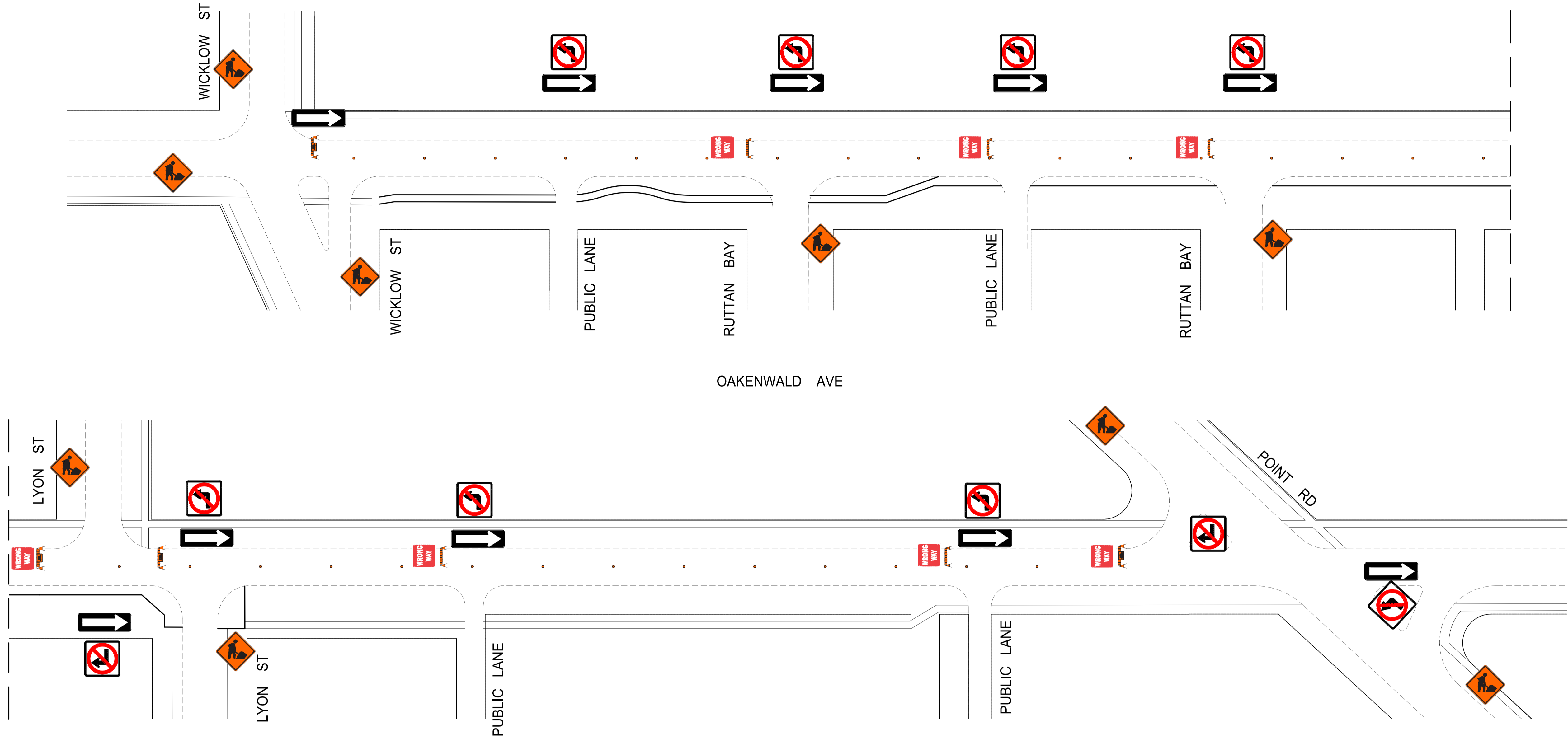
THE CITY OF WINNIPEG
PUBLIC WORKS DEPARTMENT
ENGINEERING SERVICES DIVISION

2022 LOCAL STREET RENEWALS
GERARD STREET
TEMPORARY TRAFFIC SIGNAGE

Mar 18, 2022 - 3:59pm
F:\2021\21-12618-00 - 2022 Street Program Package 22-R-03\4.0 Tech + Prof Services\4.11 Highways_Bridges\4.11.06 Drawings\03 Working Dwg\Gerard St_Signage.dwg - Job: GERARD STREET



OAKENWALD AVE



OAKENWALD AVE

TRAFFIC SIGNAGE

TC-2 ROADWORK

RB-11 (L/R) TURN PROHIBITED

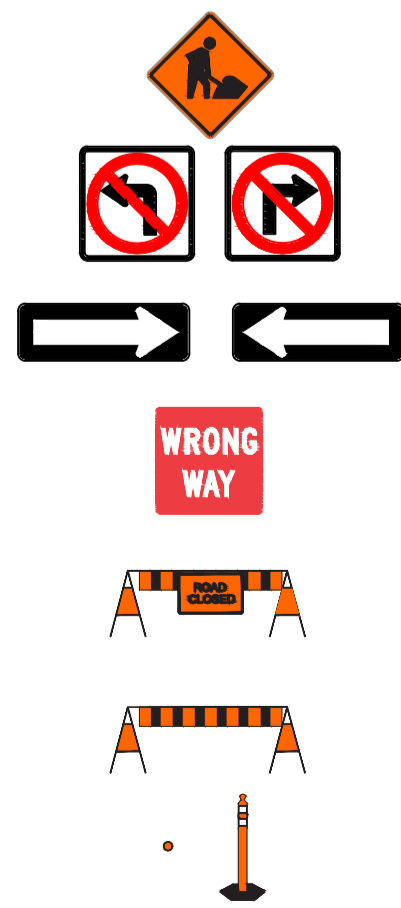
RB 21 (L/R) ONE-WAY SIGN

RB 22 WRONG WAY SIGN

ROAD CLOSED BARRICADE

BARRICADE

POLY POST



NOTES:

1. ALL TRAFFIC SIGNAGE AND TEMPORARY TRAFFIC CONTROL TO CONFORM WITH THE LATEST REVISION OF THE CITY OF WINNIPEG MANUAL OF TEMPORARY TRAFFIC CONTROL ON CITY STREETS
2. CONTRACTOR SHALL MAINTAIN SAFE PEDESTRIAN ACCESS AND CROSSINGS. WHERE SIDEWALKS ARE LOCATED ON BOTH SIDES OF THE STREET, CONTRACTOR MUST MAINTAIN PEDESTRIAN ACCESS ON ONE SIDE AT ALL TIME.
3. CONSTRUCTION IS TO BE DONE LANE AT A TIME WITH TRAFFIC TO BE MAINTAINED IN THE EASTBOUND DIRECTION. TRAFFIC IN THE WESTBOUND DIRECTION IS TO BE CLOSED FOR THE DURATION OF THE PROJECT. WHEN CONSTRUCTION IS COMPLETED IN FIRST LANE, TRAFFIC WILL BE MOVED TO THE COMPLETED LANE AND TRAFFIC CONTROL WILL BE MIRRORED.
4. PARKING TO BE REMOVED AT THE TIME OF CONSTRUCTION

METRIC

WHOLE NUMBERS INDICATE MILLIMETRES
DECIMALIZED NUMBERS INDICATE METRES

**ENGINEERS
GEOSCIENTISTS
MANITOBA**
Certificate of Authorization
WSP Canada Inc.
No. 5750

FOR INFORMATION ONLY

THE CITY OF WINNIPEG
PUBLIC WORKS DEPARTMENT
ENGINEERING SERVICES DIVISION

2022 LOCAL STREET RENEWALS

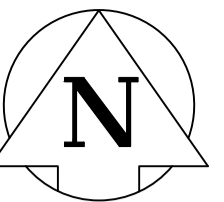
OAKENWALD AVENUE

TEMPORARY TRAFFIC SIGNAGE

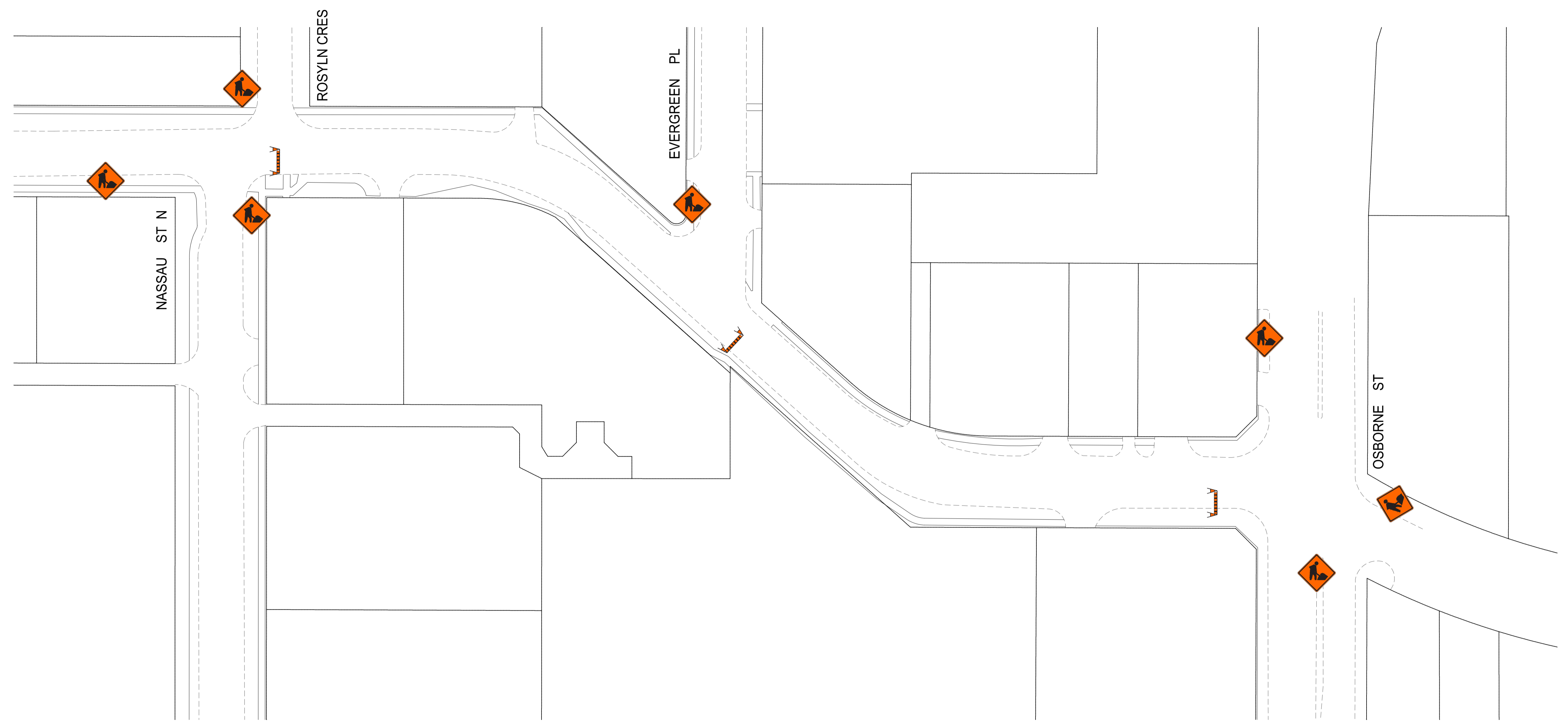
wsp

WSP Canada Inc.
1600 Buffalo Place
Winnipeg, MB R3T 6B8
t. 204.474.2864
f. 204.474.2864
www.wsp.com

Mar 18, 2022 - 4:06pm
F:\2021\21-12618-00 - 2022 Street Program Package 22-R-03\4.0 Tech + Prof Services\4.11 Highways_Bridges\4.11.06 Drawings\03 Working Dwg\Oakenwald Ave_Signage.dwg - tab:OAKENWALD_SIGNAGE

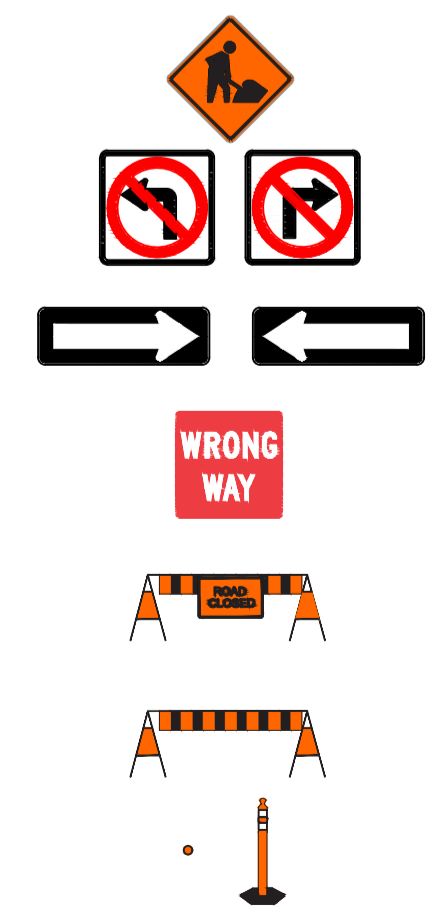


ROSLYN RD



TRAFFIC SIGNAGE

- TC-2 ROADWORK
- RB-11 (L/R) TURN PROHIBITED
- RB 21 (L/R) ONE-WAY SIGN
- RB 22 WRONG WAY SIGN
- ROAD CLOSED BARRICADE
- BARRICADE
- POLY POST



NOTES:

1. ALL TRAFFIC SIGNAGE AND TEMPORARY TRAFFIC CONTROL TO CONFORM WITH THE LATEST REVISION OF THE CITY OF WINNIPEG MANUAL OF TEMPORARY TRAFFIC CONTROL ON CITY STREETS
2. CONTRACTOR SHALL MAINTAIN SAFE PEDESTRIAN ACCESS AND CROSSINGS. WHERE SIDEWALKS ARE LOCATED ON BOTH SIDES OF THE STREET, CONTRACTOR MUST MAINTAIN PEDESTRIAN ACCESS ON ONE SIDE AT ALL TIME.
3. CONSTRUCTION IS TO BE COMPLETED LANE AT A TIME WITH TRAFFIC TO BE MAINTAINED IN BOTH DIRECTIONS. WHEN CONSTRUCTION IS COMPLETE IN FIRST LANE, TRAFFIC WILL BE MOVED TO THE COMPLETED LANE AND TRAFFIC CONTROL MIRRORED.
4. PARKING TO BE REMOVED AT TIME OF CONSTRUCTION

METRIC
WHOLE NUMBERS INDICATE MILLIMETRES
DECIMALIZED NUMBERS INDICATE METRES

**ENGINEERS
GEOSCIENTISTS
MANITOBA**
Certificate of Authorization
WSP Canada Inc.
No. 5750

FOR INFORMATION ONLY

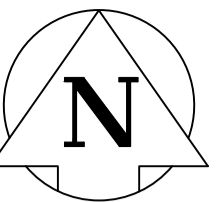


WSP Canada Inc.
1600 Buffalo Place
Winnipeg, MB R3T 6B8
t. 204.474.2864
f. 204.474.2864
www.wsp.com

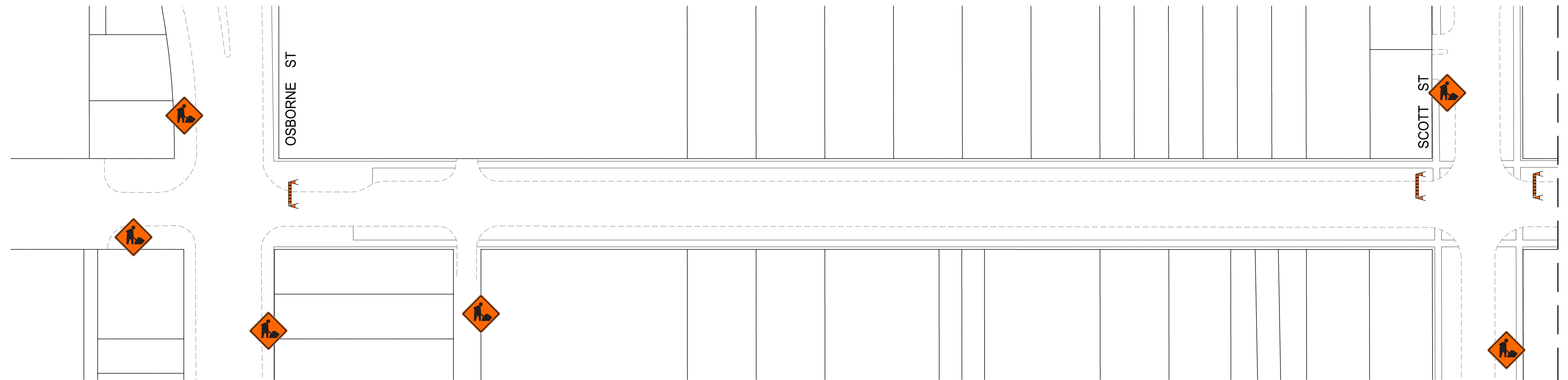
THE CITY OF WINNIPEG
PUBLIC WORKS DEPARTMENT
ENGINEERING SERVICES DIVISION

2022 LOCAL STREET RENEWALS
ROSLYN ROAD
TEMPORARY TRAFFIC SIGNAGE

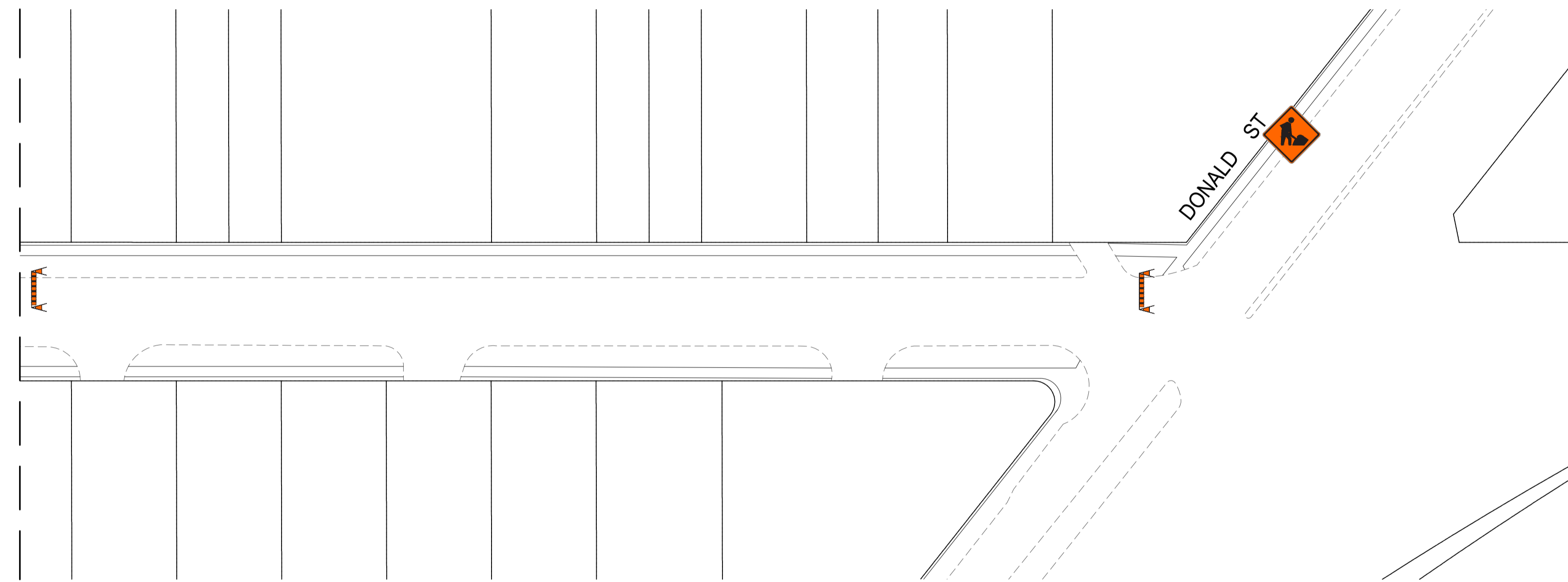
Mar 18, 2022 - 4:01pm
F:\2021\21-12618-00 - 2022 Street Program Package 22-R-03\4.0 Tech + Prof Services\4.11 Highways\Bridges\4.11.06 Drawings\03 Working Dwg\Roslyn Rd_Signage.dwg - tab:ROSLYN RD



WARDLAW AVE



WARDLAW AVE



TRAFFIC SIGNAGE

TC-2 ROADWORK

RB-11 (L/R) TURN PROHIBITED

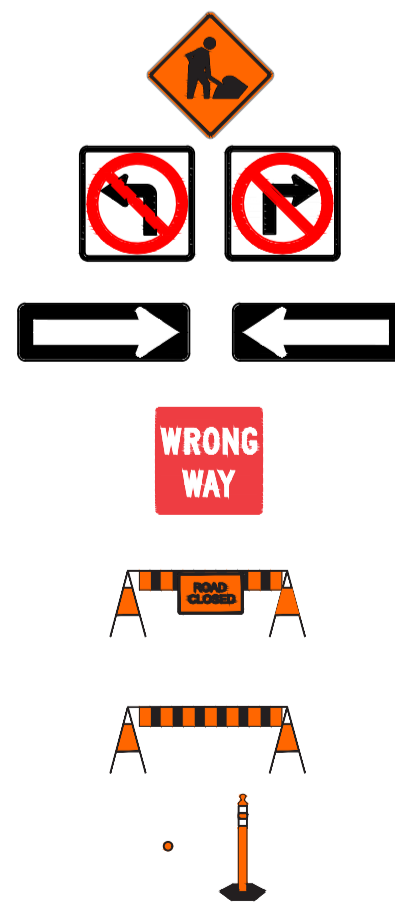
RB 21 (L/R) ONE-WAY SIGN

RB 22 WRONG WAY SIGN

ROAD CLOSED BARRICADE

BARRICADE

POLY POST



NOTES:

1. ALL TRAFFIC SIGNAGE AND TEMPORARY TRAFFIC CONTROL TO CONFORM WITH THE LATEST REVISION OF THE CITY OF WINNIPEG MANUAL OF TEMPORARY TRAFFIC CONTROL ON CITY STREETS
2. CONTRACTOR SHALL MAINTAIN SAFE PEDESTRIAN ACCESS AND CROSSINGS. WHERE SIDEWALKS ARE LOCATED ON BOTH SIDES OF THE STREET, CONTRACTOR MUST MAINTAIN PEDESTRIAN ACCESS ON ONE SIDE AT ALL TIME.
3. CONSTRUCTION IS TO BE COMPLETED LANE AT A TIME WITH TRAFFIC TO BE MAINTAINED IN BOTH DIRECTIONS. WHEN CONSTRUCTION IS COMPLETE IN FIRST LANE, TRAFFIC WILL BE MOVED TO THE COMPLETED LANE AND TRAFFIC CONTROL MIRRORED.
4. PARKING TO BE REMOVED AT TIME OF CONSTRUCTION

METRIC

WHOLE NUMBERS INDICATE MILLIMETRES
DECIMALIZED NUMBERS INDICATE METRES

**ENGINEERS
GEOSCIENTISTS
MANITOBA**
Certificate of Authorization
WSP Canada Inc.
No. 5750

FOR INFORMATION ONLY



THE CITY OF WINNIPEG
PUBLIC WORKS DEPARTMENT
ENGINEERING SERVICES DIVISION

2022 LOCAL STREET RENEWALS

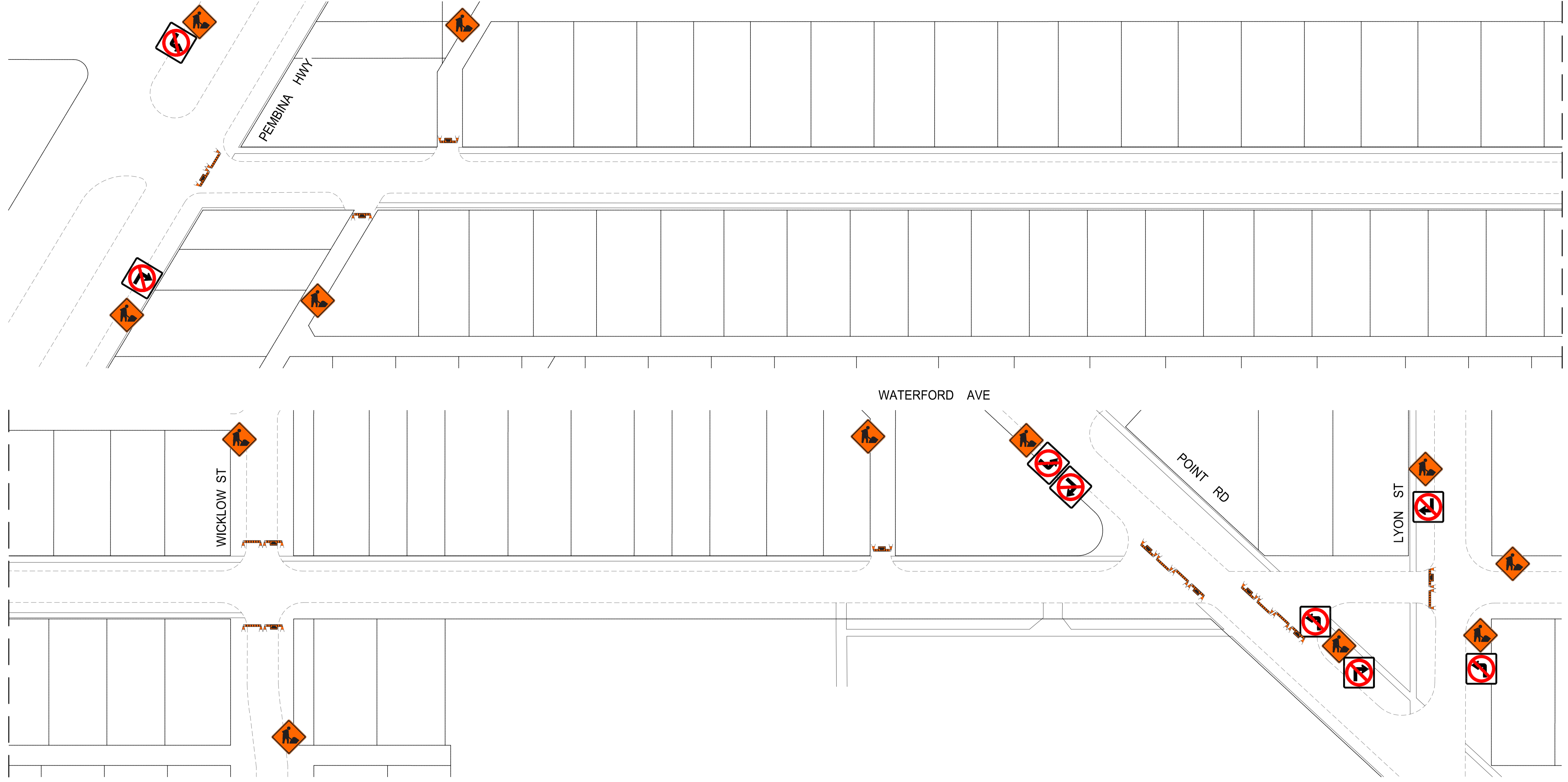
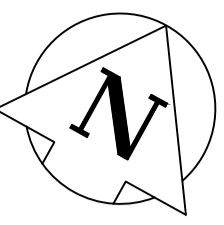
WARDLAW AVENUE

TEMPORARY TRAFFIC SIGNAGE



WSP Canada Inc.
1600 Buffalo Place
Winnipeg, MB R3T 6B8
t. 204.474.2864
f. 204.474.2864
www.wsp.com

WATERFORD AVE



TRAFFIC SIGNAGE

TC-2 ROADWORK

RB-11 (L/R) TURN PROHIBITED

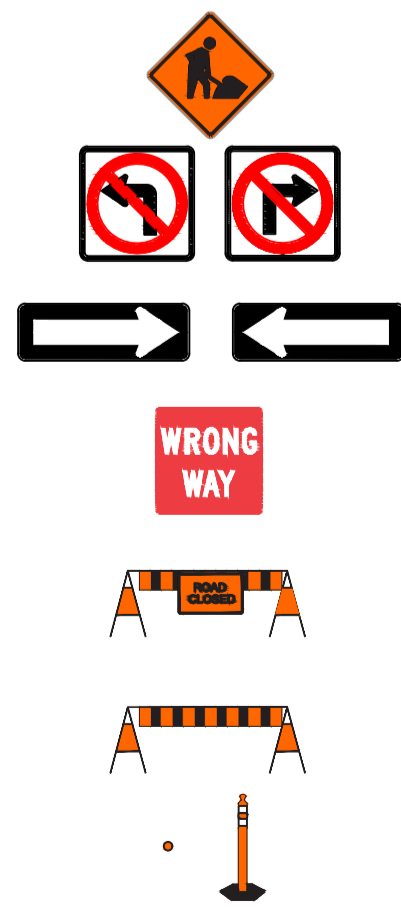
RB 21 (L/R) ONE-WAY SIGN

RB 22 WRONG WAY SIGN

ROAD CLOSED BARRICADE

BARRICADE

POLY POST



NOTES:

1. ALL TRAFFIC SIGNAGE AND TEMPORARY TRAFFIC CONTROL TO CONFORM WITH THE LATEST REVISION OF THE CITY OF WINNIPEG MANUAL OF TEMPORARY TRAFFIC CONTROL ON CITY STREETS
2. CONTRACTOR SHALL MAINTAIN SAFE PEDESTRIAN ACCESS AND CROSSINGS. WHERE SIDEWALKS ARE LOCATED ON BOTH SIDES OF THE STREET, CONTRACTOR MUST MAINTAIN PEDESTRIAN ACCESS ON ONE SIDE AT ALL TIME.
3. ROAD IS TO BE CLOSED FOR THE DURATION OF CONSTRUCTION.

METRIC

WHOLE NUMBERS INDICATE MILLIMETRES
DECIMALIZED NUMBERS INDICATE METRES

**ENGINEERS
GEOSCIENTISTS
MANITOBA**
Certificate of Authorization
WSP Canada Inc.
No. 5750

FOR INFORMATION ONLY

THE CITY OF WINNIPEG
PUBLIC WORKS DEPARTMENT
ENGINEERING SERVICES DIVISION

2022 LOCAL STREET RENEWALS

WATERFORD AVENUE

TEMPORARY TRAFFIC SIGNAGE



WSP Canada Inc.
1600 Buffalo Place
Winnipeg, MB R3T 6B8
t. 204.474.2864
f. 204.474.2864
www.wsp.com

Mar 18, 2022 - 3:55pm
F:\2021\21-12618-00 - 2022 Street Program Package 22-R-03\4.0 Tech + Prof Services\4.11 Highways_Bridges\4.11.06 Drawings\03 Working Dwg\Waterford Ave_Signage.dwg -tab:WATERFORD